

CDR File Information

User Entered VIN	2MEHM75W16X*****
User	Shawn Gyorke
Case Number	08-00022
EDR Data Imaging Date	Saturday, June 21 2008
Crash Date	Thursday, June 19 2008
Filename	2MEHM75W16XXXXXXX_PCM.CDR
Saved on	Saturday, June 21 2008 at 08:11:27 AM
Collected with CDR version	Crash Data Retrieval Tool 3.00
Reported with CDR version	Crash Data Retrieval Tool 3.2
EDR Device Type	powertrain control module
Restraint Deployment Signal Received	Yes

IMPORTANT NOTICE: Robert Bosch LLC recommends that the latest production release of Crash Data Retrieval software be utilized when viewing, printing or exporting any retrieved data from within the CDR program. This ensures that the retrieved data has been translated using the most recent information including but not limited to that which was provided by the manufacturers of the vehicles supported in this product.

Module Information

The retrieval of this data has been authorized by the vehicle's owner, or other legal authority such as a subpoena or search warrant, as indicated by the CDR tool user on Saturday, June 21 2008 at 08:11:27 AM .

FORD POWERTRAIN CONTROL MODULE EVENT DATA INTERPRETATION GUIDE

1. This document is intended to assist you in reading the data that has been retrieved from a Powertrain Control Module ("PCM") contained in a Ford vehicle. This document is further intended to provide general guidelines and it not intended to provide information regarding the interpretation of a specific read-out.

2. You have been provided with the data from the PCM in three formats. First, you have been provided with a table in the CDR report that contains data retrieved from a PCM converted to common English units (the "PCM Data Tables"), which is accompanied by an explanation of the column headings. Second, you have been provided with raw data display also included in the CDR report following the PCM Data Tables which includes the raw hexadecimal information as it was retrieved from the PCM. PCM data retrieved from the PCM which is included in both the PCM Data Tables and Hexadecimal format cannot be changed or modified by the user. The third available format is provided to you in a file which is formatted in a common ASCII text, CSV (comma separated variable) file. The CSV file contains the same converted data displayed in the PCM Data Tables found in the CDR report. The CSV file can be imported into a spreadsheet application for further data analysis.

3. The data points in the PCM Data Tables and in the CSV file occur every 0.2 seconds of time. It should be pointed out that "Relative Time" included in the PCM Data Table and in the CSV file is calculated based on the 0.2 second time interval and is displayed relative to the receipt of a Restraint Deployment Signal from the RCM. The "Relative Time" Information is not data which is retrieved from the PCM but is calculated based on the above information.

4. In the event that one of the vehicle's restraint devices (e.g., the vehicle's airbag or pretensioner) have deployed as a result of a collision, the Restraint Control Module or RCM will send a Restraints Deployment Signal (RDS) flag to the PCM via the Vehicle Data Bus. If the PCM receives an RDS flag, it will lock the data. It should be pointed out that the RCM and Vehicle Data Bus both require power for tenths of a second after the collision in order to send a signal or flag to the PCM.

5. If no RDS flag has been received from the RCM and there is still power to the PCM, the PCM data will not lock and the circular buffer will continuously overwrite itself when the vehicle's ignition is in the run position. In this event, data contained in the PCM that was relevant to the collision may be lost. However, if power was lost as a result of the collision, or the ignition key was turned off shortly after the event, there may still be data relating to the collision in the PCM.

6. Finding the data relating to the moment of impact:

a.) With regard to the PCM Data Tables and the CSV file where a Restraint Deployment Signal is received, the data is displayed in ordered of the "Relative Time (calc.);" parameter beginning with the oldest recorded frame of data.

The moment of impact can be found by reviewing the data contained in the RDS column. Specifically, the data samples recorded with an RDS flag equal to "Received" in the PCM Data Table and CSV file signify points recorded after the PCM received the RDS signal from the RCM. If the PCM has received an RDS flag, the moment of impact is typically set at the RDS = "Not Received" in the PCM Data Tables reading that immediately precedes a reading of RDS = "Received". The last RDS = "Received" data point signifies the last data point recorded in the event.

b.) With regard to the PCM Data Tables and CSV file where a Remote Deployment Signal is not received, the data is displayed in order of the "Buffer Address" parameter data beginning with the lowest address value. The PCM buffer is circular and the data point of first address listed in the PCM Data Tables does not necessarily signify the beginning of the PCM recording. The start and stop time of the PCM recording could be in the middle of the Table.

The moment of impact usually correlates with a discontinuity of the data listed in the table. If a single, significant discontinuity in the data is found, the data point immediately preceding the discontinuity is likely to be the last data point recorded. This point usually signifies impact time zero. If there is no single significant discontinuity, the data must be examined in detail to determine the largest discontinuity in the largest number of data elements. If no single largest discontinuity can be determined, it may not be possible to determine the moment of impact.

7. The PCM Data Tables further show a column labeled as the “Key on Timer – 63.75 Max (sec)” or PUTMR. The PUTMR shows the length of time that the PCM was functioning for the most recent key cycle. The timer ascends to a maximum value of 63.75 seconds. If the data was not locked by an RDS flag and the ignition key was turned off and on again, the PCM will begin to write new data starting at the beginning of the data table. While it is not common, there are instances where the first portion of the data table has subsequent-key-on, post-crash data; while the latter portion of the data table has data from the key cycle in which the crash occurred. In other rare cases, an event has occurred in less than 25 seconds after key on and older data from prior key cycles has been left in the latter part of the buffer. Review the Key on Timer – 63.75 Max (sec) (PUTMR) data for discontinuities to determine if this has occurred.

8. Data displayed in the Key on Timer – 63.75 Max (sec) column has a resolution of 0.25 seconds and rounds actual data to the nearest 0.25 seconds. The data points occur every 0.2 seconds.

Actual time	Key on Timer display
0.0	0.0
0.2	0.25
0.4	0.50
0.6	0.50
0.8	0.75
1.0	1.00

9. Recorded Vehicle Speed is proportional to transmission output shaft speed and accuracy can be affected if the vehicle has had the tire size or inflation pressure or the final drive axle ratio changed from the factory build specifications.

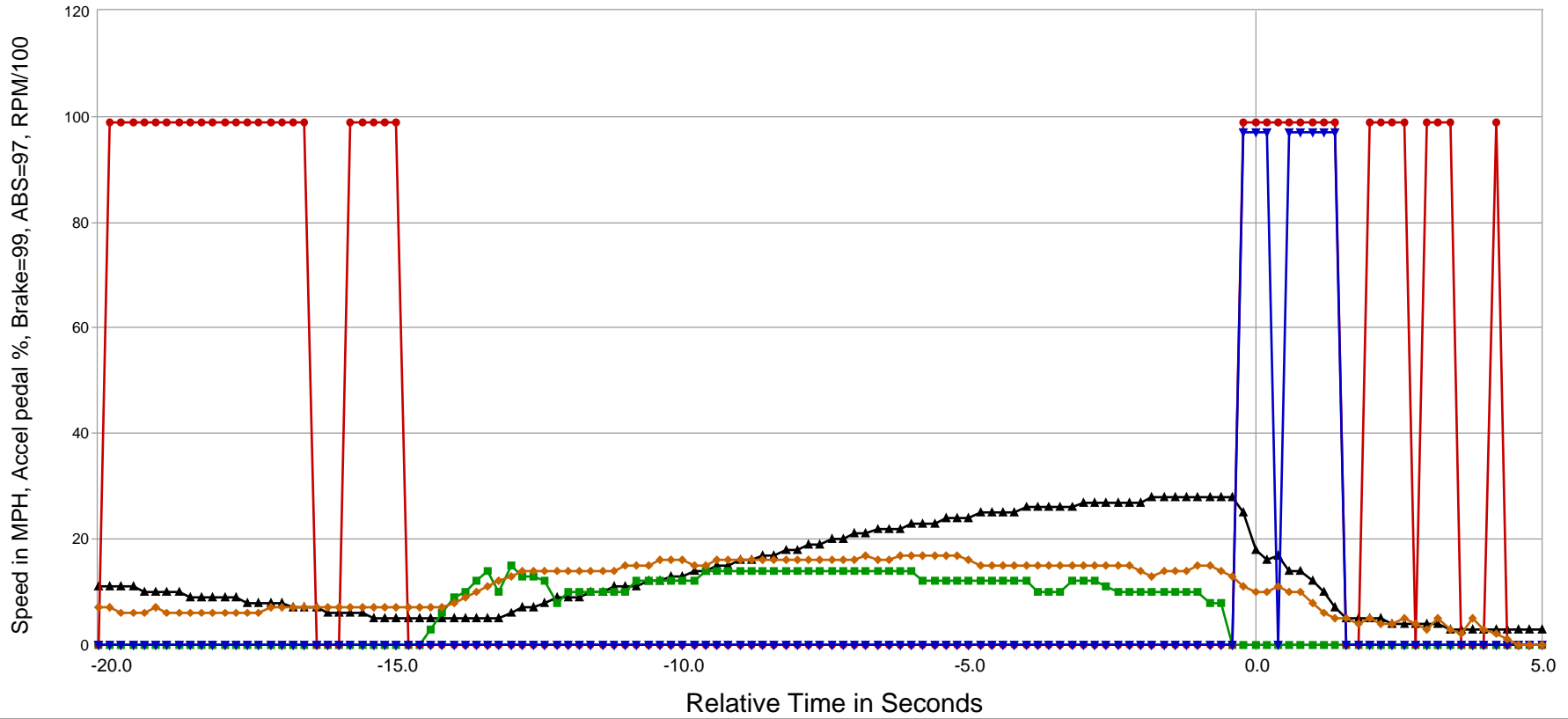
PCM Data Source:

- All PCM recorded data is fed directly from sensors to the PCM where raw signals are processed, and stored internally, except for the following parameters which are transmitted via the vehicle's communication network:
 - Stability Control
 - Traction Control
 - ABS
 - Restraint Deployment Signal

PCM Module Information

Vehicle Identification Number (from PCM)	2MEHM75W16X*****
PCM File Name (calibration level)	FCFE2S4.HEX*
PCM Part Number	6W7A-12A650-UC

2MEHM75W16X***** PCM EDR Crash Data - RDS Received



▲ Vehicle Speed (MPH) ■ Accelerator Pedal (%) ● Brake Switch (0=Off/99=On) ▼ ABS (0=Inactive/97=Active) ◆ RPM/100

PCM EDR Data (1)

Buffer Address (Hex)	Relative Time (calc.) (Seconds)	Restraint Deployment Signal (Received / Not Received)	Speed, Vehicle Indicated (MPH [km/h])	Accelerator Pedal % Full (%)	Engine Throttle % Full (%)	Brake Switch (On / Off)	Brake SC De-ac (On / Off)	ABS (Active / Inactive)	Transmission - Neutral (Neutral / Not Neutral)
EA000720	-20.2	Not Received	11.2 [18]	0	3.5	OFF	ON	Not Active	Not Neutral
EA000730	-20.0	Not Received	11 [17.7]	0	3.5	ON	ON	Not Active	Not Neutral
EA000740	-19.8	Not Received	10.8 [17.4]	0	3.5	ON	ON	Not Active	Not Neutral
EA000750	-19.6	Not Received	10.5 [16.9]	0	3.5	ON	ON	Not Active	Not Neutral
EA000760	-19.4	Not Received	10.3 [16.6]	0	3.5	ON	ON	Not Active	Not Neutral
EA000770	-19.2	Not Received	10.1 [16.3]	0	3.5	ON	ON	Not Active	Not Neutral
EA000780	-19.0	Not Received	9.9 [15.9]	0	3.5	ON	ON	Not Active	Not Neutral
EA000790	-18.8	Not Received	9.6 [15.4]	0	3.5	ON	ON	Not Active	Not Neutral
EA0007A0	-18.6	Not Received	9.4 [15.1]	0	3.5	ON	ON	Not Active	Not Neutral
EA0007B0	-18.4	Not Received	9.2 [14.8]	0	3.5	ON	ON	Not Active	Not Neutral
EA0007C0	-18.2	Not Received	9 [14.5]	0	3.5	ON	ON	Not Active	Not Neutral
EA0007D0	-18.0	Not Received	8.7 [14]	0	3.5	ON	ON	Not Active	Not Neutral
EA0007E0	-17.8	Not Received	8.5 [13.7]	0	3.5	ON	ON	Not Active	Not Neutral
EA0007F0	-17.6	Not Received	8.3 [13.4]	0	3.5	ON	ON	Not Active	Not Neutral
EA000010	-17.4	Not Received	8 [12.9]	0	3.5	ON	ON	Not Active	Not Neutral
EA000020	-17.2	Not Received	7.9 [12.7]	0	3.5	ON	ON	Not Active	Not Neutral
EA000030	-17.0	Not Received	7.7 [12.4]	0	3.5	ON	ON	Not Active	Not Neutral
EA000040	-16.8	Not Received	7.4 [11.9]	0	3.5	ON	ON	Not Active	Not Neutral
EA000050	-16.6	Not Received	7 [11.3]	0	3.5	ON	ON	Not Active	Not Neutral
EA000060	-16.4	Not Received	6.6 [10.6]	0	3.5	OFF	ON	Not Active	Not Neutral
EA000070	-16.2	Not Received	6.1 [9.8]	0	3.5	OFF	ON	Not Active	Not Neutral
EA000080	-16.0	Not Received	5.8 [9.3]	0	3.5	OFF	ON	Not Active	Not Neutral
EA000090	-15.8	Not Received	5.7 [9.2]	0	3.5	ON	ON	Not Active	Not Neutral
EA0000A0	-15.6	Not Received	5.6 [9]	0	3.5	ON	ON	Not Active	Not Neutral
EA0000B0	-15.4	Not Received	5.4 [8.7]	0	3.5	ON	ON	Not Active	Not Neutral
EA0000C0	-15.2	Not Received	5.2 [8.4]	0	3.5	ON	ON	Not Active	Not Neutral
EA0000D0	-15.0	Not Received	5 [8]	0	3.5	ON	ON	Not Active	Not Neutral
EA0000E0	-14.8	Not Received	4.8 [7.7]	0	3.5	OFF	ON	Not Active	Not Neutral
EA0000F0	-14.6	Not Received	4.8 [7.7]	0	3.5	OFF	OFF	Not Active	Not Neutral
EA000100	-14.4	Not Received	4.6 [7.4]	3	4	OFF	OFF	Not Active	Not Neutral
EA000110	-14.2	Not Received	4.6 [7.4]	6	5.5	OFF	OFF	Not Active	Not Neutral
EA000120	-14.0	Not Received	4.5 [7.2]	9	6.5	OFF	OFF	Not Active	Not Neutral
EA000130	-13.8	Not Received	4.6 [7.4]	9.5	7	OFF	OFF	Not Active	Not Neutral
EA000140	-13.6	Not Received	4.6 [7.4]	11.5	8.5	OFF	OFF	Not Active	Not Neutral
EA000150	-13.4	Not Received	4.9 [7.9]	14.5	10.5	OFF	OFF	Not Active	Not Neutral
EA000160	-13.2	Not Received	5.4 [8.7]	10.5	10.5	OFF	OFF	Not Active	Not Neutral
EA000170	-13.0	Not Received	5.9 [9.5]	15	12	OFF	OFF	Not Active	Not Neutral
EA000180	-12.8	Not Received	6.5 [10.5]	13	12	OFF	OFF	Not Active	Not Neutral
EA000190	-12.6	Not Received	7.1 [11.4]	13	12.5	OFF	OFF	Not Active	Not Neutral
EA0001A0	-12.4	Not Received	7.7 [12.4]	11.5	12.5	OFF	OFF	Not Active	Not Neutral
EA0001B0	-12.2	Not Received	8.9 [14.3]	8	11.5	OFF	OFF	Not Active	Not Neutral
EA0001C0	-12.0	Not Received	8.8 [14.2]	10	11.5	OFF	OFF	Not Active	Not Neutral
EA0001D0	-11.8	Not Received	9.4 [15.1]	10	12	OFF	OFF	Not Active	Not Neutral
EA0001E0	-11.6	Not Received	9.7 [15.6]	10	12	OFF	OFF	Not Active	Not Neutral
EA0001F0	-11.4	Not Received	10.2 [16.4]	10	12	OFF	OFF	Not Active	Not Neutral
EA000200	-11.2	Not Received	10.5 [16.9]	10	12.5	OFF	OFF	Not Active	Not Neutral
EA000210	-11.0	Not Received	11 [17.7]	10.5	12.5	OFF	OFF	Not Active	Not Neutral
EA000220	-10.8	Not Received	11.4 [18.3]	12	13.5	OFF	OFF	Not Active	Not Neutral
EA000230	-10.6	Not Received	11.9 [19.1]	12	14	OFF	OFF	Not Active	Not Neutral
EA000240	-10.4	Not Received	12.3 [19.8]	12	14.5	OFF	OFF	Not Active	Not Neutral
EA000250	-10.2	Not Received	12.7 [20.4]	12	14.5	OFF	OFF	Not Active	Not Neutral
EA000260	-10.0	Not Received	13.2 [21.2]	12	14.5	OFF	OFF	Not Active	Not Neutral
EA000270	-9.8	Not Received	13.7 [22]	12.5	14.5	OFF	OFF	Not Active	Not Neutral
EA000280	-9.6	Not Received	14.2 [22.8]	13.5	16	OFF	OFF	Not Active	Not Neutral
EA000290	-9.4	Not Received	14.8 [23.8]	13.5	16.5	OFF	OFF	Not Active	Not Neutral
EA0002A0	-9.2	Not Received	15.2 [24.5]	13.5	16.5	OFF	OFF	Not Active	Not Neutral
EA0002B0	-9.0	Not Received	15.8 [25.4]	13.5	16	OFF	OFF	Not Active	Not Neutral
EA0002C0	-8.8	Not Received	16.3 [26.2]	13.5	16.5	OFF	OFF	Not Active	Not Neutral
EA0002D0	-8.6	Not Received	16.8 [27]	13.5	16	OFF	OFF	Not Active	Not Neutral
EA0002E0	-8.4	Not Received	17.4 [28]	13.5	16.5	OFF	OFF	Not Active	Not Neutral
EA0002F0	-8.2	Not Received	18 [29]	13.5	16	OFF	OFF	Not Active	Not Neutral
EA000300	-8.0	Not Received	18.4 [29.6]	13.5	16	OFF	OFF	Not Active	Not Neutral
EA000310	-7.8	Not Received	18.9 [30.4]	13.5	16.5	OFF	OFF	Not Active	Not Neutral

Buffer Address (Hex)	Relative Time (calc.) (Seconds)	Restraint Deployment Signal (Received / Not Received)	Speed, Vehicle Indicated (MPH [km/h])	Accelerator Pedal % Full (%)	Engine Throttle % Full (%)	Brake Switch (On / Off)	Brake SC De-ac (On / Off)	ABS (Active / Inactive)	Transmission - Neutral (Neutral / Not Neutral)
EA000320	-7.6	Not Received	19.4 [31.2]	13.5	16	OFF	OFF	Not Active	Not Neutral
EA000330	-7.4	Not Received	19.9 [32]	13.5	16	OFF	OFF	Not Active	Not Neutral
EA000340	-7.2	Not Received	20.4 [32.8]	13.5	16	OFF	OFF	Not Active	Not Neutral
EA000350	-7.0	Not Received	20.8 [33.5]	13.5	15.5	OFF	OFF	Not Active	Not Neutral
EA000360	-6.8	Not Received	21.1 [33.9]	13.5	15.5	OFF	OFF	Not Active	Not Neutral
EA000370	-6.6	Not Received	21.6 [34.8]	13.5	15.5	OFF	OFF	Not Active	Not Neutral
EA000380	-6.4	Not Received	22 [35.4]	13.5	15.5	OFF	OFF	Not Active	Not Neutral
EA000390	-6.2	Not Received	22.3 [35.9]	13.5	15.5	OFF	OFF	Not Active	Not Neutral
EA0003A0	-6.0	Not Received	22.7 [36.5]	13.5	15.5	OFF	OFF	Not Active	Not Neutral
EA0003B0	-5.8	Not Received	23.1 [37.2]	12	15	OFF	OFF	Not Active	Not Neutral
EA0003C0	-5.6	Not Received	23.4 [37.7]	12	15	OFF	OFF	Not Active	Not Neutral
EA0003D0	-5.4	Not Received	23.8 [38.3]	12	14.5	OFF	OFF	Not Active	Not Neutral
EA0003E0	-5.2	Not Received	23.9 [38.5]	12.5	15	OFF	OFF	Not Active	Not Neutral
EA0003F0	-5.0	Not Received	24.3 [39.1]	12.5	14	OFF	OFF	Not Active	Not Neutral
EA000400	-4.8	Not Received	24.6 [39.6]	12.5	14.5	OFF	OFF	Not Active	Not Neutral
EA000410	-4.6	Not Received	24.8 [39.9]	12.5	14.5	OFF	OFF	Not Active	Not Neutral
EA000420	-4.4	Not Received	25.1 [40.4]	12.5	14.5	OFF	OFF	Not Active	Not Neutral
EA000430	-4.2	Not Received	25.4 [40.9]	12.5	14.5	OFF	OFF	Not Active	Not Neutral
EA000440	-4.0	Not Received	25.6 [41.2]	12.5	14.5	OFF	OFF	Not Active	Not Neutral
EA000450	-3.8	Not Received	25.9 [41.7]	10.5	13	OFF	OFF	Not Active	Not Neutral
EA000460	-3.6	Not Received	26.1 [42]	10.5	13	OFF	OFF	Not Active	Not Neutral
EA000470	-3.4	Not Received	26.3 [42.3]	10.5	13	OFF	OFF	Not Active	Not Neutral
EA000480	-3.2	Not Received	26.5 [42.6]	11.5	13	OFF	OFF	Not Active	Not Neutral
EA000490	-3.0	Not Received	26.7 [43]	11.5	13	OFF	OFF	Not Active	Not Neutral
EA0004A0	-2.8	Not Received	27 [43.4]	11.5	13	OFF	OFF	Not Active	Not Neutral
EA0004B0	-2.6	Not Received	27.1 [43.6]	11	12.5	OFF	OFF	Not Active	Not Neutral
EA0004C0	-2.4	Not Received	27.2 [43.8]	10	12.5	OFF	OFF	Not Active	Not Neutral
EA0004D0	-2.2	Not Received	27.4 [44.1]	10	12.5	OFF	OFF	Not Active	Not Neutral
EA0004E0	-2.0	Not Received	27.4 [44.1]	10	12.5	OFF	OFF	Not Active	Not Neutral
EA0004F0	-1.8	Not Received	27.6 [44.4]	10	12.5	OFF	OFF	Not Active	Not Neutral
EA000500	-1.6	Not Received	27.7 [44.6]	10	13	OFF	OFF	Not Active	Not Neutral
EA000510	-1.4	Not Received	27.9 [44.9]	10.5	13.5	OFF	OFF	Not Active	Not Neutral
EA000520	-1.2	Not Received	27.9 [44.9]	10.5	13.5	OFF	OFF	Not Active	Not Neutral
EA000530	-1.0	Not Received	28.2 [45.4]	10.5	13.5	OFF	OFF	Not Active	Not Neutral
EA000540	-0.8	Not Received	28.2 [45.4]	8.5	11.5	OFF	OFF	Not Active	Not Neutral
EA000550	-0.6	Not Received	28.4 [45.7]	7.5	10.5	OFF	OFF	Not Active	Not Neutral
EA000560	-0.4	Not Received	28.5 [45.9]	0	7.5	OFF	OFF	Not Active	Not Neutral
EA000570	-0.2	Not Received	24.6 [39.6]	0	7	ON	ON	Active	Not Neutral
EA000580	0.0	Not Received	17.6 [28.3]	0	6.5	ON	ON	Active	Not Neutral
EA000590	0.2	Received	16.3 [26.2]	0	5.5	ON	ON	Active	Not Neutral
EA0005A0	0.4	Received	16.7 [26.9]	0	5	ON	ON	Not Active	Not Neutral
EA0005B0	0.6	Received	14.2 [22.8]	0	5	ON	ON	Active	Not Neutral
EA0005C0	0.8	Received	14.3 [23]	0	4.5	ON	ON	Active	Not Neutral
EA0005D0	1.0	Received	11.8 [19]	0	4.5	ON	ON	Active	Not Neutral
EA0005E0	1.2	Received	10.2 [16.4]	0	4.5	ON	ON	Active	Not Neutral
EA0005F0	1.4	Received	6.7 [10.8]	0	4.5	ON	ON	Active	Not Neutral
EA000600	1.6	Received	5 [8]	0	4.5	OFF	ON	Not Active	Not Neutral
EA000610	1.8	Received	4.8 [7.7]	0	4	OFF	ON	Not Active	Not Neutral
EA000620	2.0	Received	4.7 [7.6]	0	4	ON	ON	Not Active	Not Neutral
EA000630	2.2	Received	4.6 [7.4]	0	4	ON	ON	Not Active	Not Neutral
EA000640	2.4	Received	4.4 [7.1]	0	4	ON	ON	Not Active	Not Neutral
EA000650	2.6	Received	4 [6.4]	0	4	ON	ON	Not Active	Not Neutral
EA000660	2.8	Received	3.7 [6]	0	4.5	OFF	ON	Not Active	Not Neutral
EA000670	3.0	Received	3.6 [5.8]	0	4.5	ON	ON	Not Active	Not Neutral
EA000680	3.2	Received	3.5 [5.6]	0	4.5	ON	ON	Not Active	Not Neutral
EA000690	3.4	Received	3.5 [5.6]	0	4.5	ON	ON	Not Active	Not Neutral
EA0006A0	3.6	Received	3.4 [5.5]	0	4.5	OFF	ON	Not Active	Not Neutral
EA0006B0	3.8	Received	3.3 [5.3]	0	5	OFF	ON	Not Active	Not Neutral
EA0006C0	4.0	Received	3.2 [5.1]	0	5	OFF	ON	Not Active	Not Neutral
EA0006D0	4.2	Received	3 [4.8]	0	5	ON	ON	Not Active	Not Neutral
EA0006E0	4.4	Received	3.1 [5]	0	2	OFF	ON	Not Active	Not Neutral
EA0006F0	4.6	Received	3 [4.8]	0	9	OFF	ON	Not Active	Not Neutral
EA000700	4.8	Received	3 [4.8]	0	8.5	OFF	OFF	Not Active	Not Neutral
EA000710	5.0	Received	2.9 [4.7]	0	8.5	OFF	OFF	Not Active	Not Neutral

PCM EDR Data (2)

Buffer Address (Hex)	Relative Time (calc.) (Seconds)	Transmission - Reverse (Reverse / Not Reverse)	Speed Control (On / Off)	Engine RPM (RPM)	Driveline Torque Commanded (N-m)	Driveline Torque Actual (N-m)	Traction Control (Active / Inactive)	Stability Control (Active / Inactive)	Key On Timer 63.75 Max (sec) (Seconds)
EA000720	-20.2	Not Reverse	OFF	701.75	-5	-36	Not Active	Not Active	48.25
EA000730	-20.0	Not Reverse	OFF	668.5	-5	-36	Not Active	Not Active	48.5
EA000740	-19.8	Not Reverse	OFF	646.75	-4	-35	Not Active	Not Active	48.75
EA000750	-19.6	Not Reverse	OFF	642	-4	-35	Not Active	Not Active	48.75
EA000760	-19.4	Not Reverse	OFF	647	-2	-33	Not Active	Not Active	49
EA000770	-19.2	Not Reverse	OFF	651.5	-3	-34	Not Active	Not Active	49.25
EA000780	-19.0	Not Reverse	OFF	646.5	-3	-34	Not Active	Not Active	49.5
EA000790	-18.8	Not Reverse	OFF	635.5	-2	-33	Not Active	Not Active	49.75
EA0007A0	-18.6	Not Reverse	OFF	629.5	-2	-34	Not Active	Not Active	49.75
EA0007B0	-18.4	Not Reverse	OFF	625.75	-1	-33	Not Active	Not Active	50
EA0007C0	-18.2	Not Reverse	OFF	618.75	-1	-76	Not Active	Not Active	50.25
EA0007D0	-18.0	Not Reverse	OFF	613.5	0	-74	Not Active	Not Active	50.5
EA0007E0	-17.8	Not Reverse	OFF	619.25	0	-73	Not Active	Not Active	50.75
EA0007F0	-17.6	Not Reverse	OFF	620.75	0	-69	Not Active	Not Active	50.75
EA000010	-17.4	Not Reverse	OFF	635.75	0	-71	Not Active	Not Active	51
EA000020	-17.2	Not Reverse	OFF	671	-1	-75	Not Active	Not Active	51.25
EA000030	-17.0	Not Reverse	OFF	686	-1	-77	Not Active	Not Active	51.5
EA000040	-16.8	Not Reverse	OFF	684	-3	-83	Not Active	Not Active	51.75
EA000050	-16.6	Not Reverse	OFF	683	-3	-85	Not Active	Not Active	51.75
EA000060	-16.4	Not Reverse	OFF	678	-2	-85	Not Active	Not Active	52
EA000070	-16.2	Not Reverse	OFF	675.5	-2	-85	Not Active	Not Active	52.25
EA000080	-16.0	Not Reverse	OFF	676.75	-1	-83	Not Active	Not Active	52.5
EA000090	-15.8	Not Reverse	OFF	683	-2	-86	Not Active	Not Active	52.75
EA0000A0	-15.6	Not Reverse	OFF	671.25	0	-80	Not Active	Not Active	52.75
EA0000B0	-15.4	Not Reverse	OFF	660.5	0	-81	Not Active	Not Active	53
EA0000C0	-15.2	Not Reverse	OFF	656.75	0	-80	Not Active	Not Active	53.25
EA0000D0	-15.0	Not Reverse	OFF	659.5	1	-77	Not Active	Not Active	53.5
EA0000E0	-14.8	Not Reverse	OFF	666.5	1	-77	Not Active	Not Active	53.75
EA0000F0	-14.6	Not Reverse	OFF	680.25	1	-75	Not Active	Not Active	53.75
EA000100	-14.4	Not Reverse	OFF	683.25	2	-72	Not Active	Not Active	54
EA000110	-14.2	Not Reverse	OFF	707.5	12	-33	Not Active	Not Active	54.25
EA000120	-14.0	Not Reverse	OFF	762.75	29	38	Not Active	Not Active	54.5
EA000130	-13.8	Not Reverse	OFF	854.5	47	121	Not Active	Not Active	54.75
EA000140	-13.6	Not Reverse	OFF	1003.25	61	195	Not Active	Not Active	54.75
EA000150	-13.4	Not Reverse	OFF	1113.75	84	308	Not Active	Not Active	55
EA000160	-13.2	Not Reverse	OFF	1211.5	97	356	Not Active	Not Active	55.25
EA000170	-13.0	Not Reverse	OFF	1285.25	99	368	Not Active	Not Active	55.5
EA000180	-12.8	Not Reverse	OFF	1358.5	109	391	Not Active	Not Active	55.75
EA000190	-12.6	Not Reverse	OFF	1390.25	113	398	Not Active	Not Active	55.75
EA0001A0	-12.4	Not Reverse	OFF	1408.75	115	388	Not Active	Not Active	56
EA0001B0	-12.2	Not Reverse	OFF	1414	109	330	Not Active	Not Active	56.25
EA0001C0	-12.0	Not Reverse	OFF	1370	104	306	Not Active	Not Active	56.5
EA0001D0	-11.8	Not Reverse	OFF	1369.25	106	296	Not Active	Not Active	56.75
EA0001E0	-11.6	Not Reverse	OFF	1395	106	287	Not Active	Not Active	56.75
EA0001F0	-11.4	Not Reverse	OFF	1411.75	108	284	Not Active	Not Active	57
EA000200	-11.2	Not Reverse	OFF	1428.25	109	278	Not Active	Not Active	57.25
EA000210	-11.0	Not Reverse	OFF	1472.25	110	283	Not Active	Not Active	57.5
EA000220	-10.8	Not Reverse	OFF	1505.5	115	296	Not Active	Not Active	57.75
EA000230	-10.6	Not Reverse	OFF	1545	119	303	Not Active	Not Active	57.75
EA000240	-10.4	Not Reverse	OFF	1583.25	123	310	Not Active	Not Active	58
EA000250	-10.2	Not Reverse	OFF	1615.5	124	311	Not Active	Not Active	58.25
EA000260	-10.0	Not Reverse	OFF	1594.5	123	307	Not Active	Not Active	58.5
EA000270	-9.8	Not Reverse	OFF	1528.25	128	293	Not Active	Not Active	58.75
EA000280	-9.6	Not Reverse	OFF	1517.75	146	314	Not Active	Not Active	58.75
EA000290	-9.4	Not Reverse	OFF	1562	145	307	Not Active	Not Active	59
EA0002A0	-9.2	Not Reverse	OFF	1589	148	308	Not Active	Not Active	59.25
EA0002B0	-9.0	Not Reverse	OFF	1583.5	150	308	Not Active	Not Active	59.5
EA0002C0	-8.8	Not Reverse	OFF	1590.25	149	300	Not Active	Not Active	59.75
EA0002D0	-8.6	Not Reverse	OFF	1608.75	147	291	Not Active	Not Active	59.75
EA0002E0	-8.4	Not Reverse	OFF	1618.5	146	283	Not Active	Not Active	60
EA0002F0	-8.2	Not Reverse	OFF	1630.25	145	278	Not Active	Not Active	60.25
EA000300	-8.0	Not Reverse	OFF	1627.75	145	271	Not Active	Not Active	60.5
EA000310	-7.8	Not Reverse	OFF	1627.75	145	266	Not Active	Not Active	60.75

Buffer Address (Hex)	Relative Time (calc.) (Seconds)	Transmission - Reverse (Reverse / Not Reverse)	Speed Control (On / Off)	Engine RPM (RPM)	Driveline Torque Commanded (N-m)	Driveline Torque Actual (N-m)	Traction Control (Active / Inactive)	Stability Control (Active / Inactive)	Key On Timer 63.75 Max (sec) (Seconds)
EA000320	-7.6	Not Reverse	OFF	1638	142	257	Not Active	Not Active	60.75
EA000330	-7.4	Not Reverse	OFF	1637.75	141	250	Not Active	Not Active	61
EA000340	-7.2	Not Reverse	OFF	1636.25	141	244	Not Active	Not Active	61.25
EA000350	-7.0	Not Reverse	OFF	1639.25	140	238	Not Active	Not Active	61.5
EA000360	-6.8	Not Reverse	OFF	1652.75	137	230	Not Active	Not Active	61.75
EA000370	-6.6	Not Reverse	OFF	1645.75	135	222	Not Active	Not Active	61.75
EA000380	-6.4	Not Reverse	OFF	1644.25	134	215	Not Active	Not Active	62
EA000390	-6.2	Not Reverse	OFF	1653.25	132	209	Not Active	Not Active	62.25
EA0003A0	-6.0	Not Reverse	OFF	1656.5	131	202	Not Active	Not Active	62.5
EA0003B0	-5.8	Not Reverse	OFF	1656.75	132	198	Not Active	Not Active	62.75
EA0003C0	-5.6	Not Reverse	OFF	1660.5	128	191	Not Active	Not Active	62.75
EA0003D0	-5.4	Not Reverse	OFF	1656.5	125	184	Not Active	Not Active	63
EA0003E0	-5.2	Not Reverse	OFF	1653.75	124	181	Not Active	Not Active	63.25
EA0003F0	-5.0	Not Reverse	OFF	1551.75	120	160	Not Active	Not Active	63.5
EA000400	-4.8	Not Reverse	OFF	1536.25	135	172	Not Active	Not Active	63.75
EA000410	-4.6	Not Reverse	OFF	1536	133	168	Not Active	Not Active	63.75
EA000420	-4.4	Not Reverse	OFF	1539.25	132	166	Not Active	Not Active	63.75
EA000430	-4.2	Not Reverse	OFF	1528.25	133	165	Not Active	Not Active	63.75
EA000440	-4.0	Not Reverse	OFF	1534.5	133	164	Not Active	Not Active	63.75
EA000450	-3.8	Not Reverse	OFF	1547.5	125	153	Not Active	Not Active	63.75
EA000460	-3.6	Not Reverse	OFF	1504	119	141	Not Active	Not Active	63.75
EA000470	-3.4	Not Reverse	OFF	1470	118	136	Not Active	Not Active	63.75
EA000480	-3.2	Not Reverse	OFF	1470	116	132	Not Active	Not Active	63.75
EA000490	-3.0	Not Reverse	OFF	1471.75	115	129	Not Active	Not Active	63.75
EA0004A0	-2.8	Not Reverse	OFF	1458.75	116	129	Not Active	Not Active	63.75
EA0004B0	-2.6	Not Reverse	OFF	1450.5	117	129	Not Active	Not Active	63.75
EA0004C0	-2.4	Not Reverse	OFF	1466	113	124	Not Active	Not Active	63.75
EA0004D0	-2.2	Not Reverse	OFF	1460.5	110	119	Not Active	Not Active	63.75
EA0004E0	-2.0	Not Reverse	OFF	1446.5	110	118	Not Active	Not Active	63.75
EA0004F0	-1.8	Not Reverse	OFF	1346.75	115	108	Not Active	Not Active	63.75
EA000500	-1.6	Not Reverse	OFF	1379.5	118	110	Not Active	Not Active	63.75
EA000510	-1.4	Not Reverse	OFF	1428.25	118	111	Not Active	Not Active	63.75
EA000520	-1.2	Not Reverse	OFF	1449.5	122	116	Not Active	Not Active	63.75
EA000530	-1.0	Not Reverse	OFF	1453.75	123	118	Not Active	Not Active	63.75
EA000540	-0.8	Not Reverse	OFF	1462	121	116	Not Active	Not Active	63.75
EA000550	-0.6	Not Reverse	OFF	1427	101	92	Not Active	Not Active	63.75
EA000560	-0.4	Not Reverse	OFF	1324.75	80	67	Not Active	Not Active	63.75
EA000570	-0.2	Not Reverse	OFF	1131.75	51	37	Not Active	Not Active	63.75
EA000580	0.0	Not Reverse	OFF	960.5	60	51	Not Active	Not Active	63.75
EA000590	0.2	Not Reverse	OFF	1020.25	39	25	Not Active	Not Active	63.75
EA0005A0	0.4	Not Reverse	OFF	1070.25	19	-5	Not Active	Not Active	63.75
EA0005B0	0.6	Not Reverse	OFF	1020.5	17	-11	Not Active	Not Active	63.75
EA0005C0	0.8	Not Reverse	OFF	971	15	-10	Not Active	Not Active	63.75
EA0005D0	1.0	Not Reverse	OFF	819.25	15	-10	Not Active	Not Active	63.75
EA0005E0	1.2	Not Reverse	OFF	588.75	13	-6	Not Active	Not Active	63.75
EA0005F0	1.4	Not Reverse	OFF	493.75	9	-12	Not Active	Not Active	63.75
EA000600	1.6	Not Reverse	OFF	547.75	10	-6	Not Active	Not Active	63.75
EA000610	1.8	Not Reverse	OFF	410	24	24	Not Active	Not Active	63.75
EA000620	2.0	Not Reverse	OFF	469.5	20	2	Not Active	Not Active	63.75
EA000630	2.2	Not Reverse	OFF	442	35	67	Not Active	Not Active	63.75
EA000640	2.4	Not Reverse	OFF	435	37	78	Not Active	Not Active	63.75
EA000650	2.6	Not Reverse	OFF	462.75	42	88	Not Active	Not Active	63.75
EA000660	2.8	Not Reverse	OFF	436.25	39	69	Not Active	Not Active	63.75
EA000670	3.0	Not Reverse	OFF	328	42	76	Not Active	Not Active	63.75
EA000680	3.2	Not Reverse	OFF	480.5	51	125	Not Active	Not Active	63.75
EA000690	3.4	Not Reverse	OFF	348	59	135	Not Active	Not Active	63.75
EA0006A0	3.6	Not Reverse	OFF	217	41	67	Not Active	Not Active	63.75
EA0006B0	3.8	Not Reverse	OFF	506.5	87	284	Not Active	Not Active	63.75
EA0006C0	4.0	Not Reverse	OFF	298.75	83	223	Not Active	Not Active	63.75
EA0006D0	4.2	Not Reverse	OFF	165.5	87	254	Not Active	Not Active	63.75
EA0006E0	4.4	Not Reverse	OFF	85.25	-90	-512	Not Active	Not Active	63.75
EA0006F0	4.6	Not Reverse	OFF	0	249	1484	Not Active	Not Active	63.75
EA000700	4.8	Not Reverse	OFF	0	238	1412	Not Active	Not Active	63.75
EA000710	5.0	Not Reverse	OFF	0	237	1405	Not Active	Not Active	63.75

Hexadecimal Data

Data that the vehicle manufacturer has specified for data retrieval is shown in the hexadecimal data section of the CDR report. The hexadecimal data section of the CDR report may contain data that is not translated by the CDR program. The control module contains additional data that is not retrievable by the CDR system.

```
0000100C0: 32 4D 45 48 4D 37 35 57 31 36 58 2A 2A 2A 2A
0000100D0: 2A FF FF FF

000010046: 46 43 46 45 32 53 34 2E 48 45 58 2A

000010054: 36 57 37 41 55 43 20 2A

0EA000000: 03 05 80 78 00 00 00 00 00 00 00 00 00 00 00
0EA000010: 00 07 07 09 EF 02 00 04 06 01 B9 00 F8 CC 00 70
0EA000020: 00 07 07 0A 7C 01 FF 03 F4 01 B5 00 F8 CD 00 FA
0EA000030: 00 07 07 0A B8 01 FF 03 D4 01 B3 00 F8 CE 00 DF
0EA000040: 00 07 07 0A B0 01 FD 03 B6 01 AD 00 F8 CF 00 0C
0EA000050: 00 07 07 0A AC 01 FD 03 81 01 AB 00 F8 CF 00 47
0EA000060: 00 06 07 0A 98 01 FE 03 4B 01 AB 00 F8 D0 00 90
0EA000070: 00 06 07 0A 8E 01 FE 03 11 01 AB 00 F8 D1 00 D3
0EA000080: 00 06 07 0A 93 01 FF 02 EC 01 AD 00 F8 D2 00 F0
0EA000090: 00 07 07 0A AC 01 FE 02 DF 01 AA 00 F8 D3 00 E6
0EA0000A0: 00 07 07 0A 7D 02 00 02 C7 01 B0 00 F8 D3 00 24
0EA0000B0: 00 07 07 0A 52 02 00 02 B1 01 AF 00 F8 D4 00 65
0EA0000C0: 00 07 07 0A 43 02 00 02 A0 01 B0 00 F8 D5 00 83
0EA0000D0: 00 07 07 0A 4E 02 01 02 7C 01 B3 00 F8 D6 00 97
0EA0000E0: 00 06 07 0A 6A 02 01 02 6C 01 B3 00 F8 D7 00 8B
0EA0000F0: 00 04 07 0A A1 02 01 02 61 01 B5 00 F8 D7 00 5F
0EA000100: 06 04 08 0A AD 02 02 02 52 01 B8 00 F8 D8 00 56
0EA000110: 0C 04 0B 0B 0E 02 0C 02 49 01 DF 00 F8 D9 00 C2
0EA000120: 12 04 0D 0B EB 02 1D 02 43 02 26 00 F8 DA 00 89
0EA000130: 13 04 0E 0D 5A 02 2F 02 47 02 79 00 F8 DB 00 AC
0EA000140: 17 04 11 0F AD 02 3D 02 53 02 C3 00 F8 DB 00 EC
0EA000150: 1D 04 15 11 67 02 54 02 73 03 34 00 F8 DC 00 7C
0EA000160: 15 04 15 12 EE 02 61 02 B1 03 64 00 F8 DD 00 80
0EA000170: 1E 04 18 14 15 02 63 02 EF 03 70 00 F8 DE 00 FE
0EA000180: 1A 04 18 15 3A 02 6D 03 46 03 87 00 F8 DF 00 62
0EA000190: 1A 04 19 15 B9 02 71 03 92 03 8E 00 F8 DF 00 8B
0EA0001A0: 17 04 19 16 03 02 73 03 D7 03 84 00 F8 E0 00 05
0EA0001B0: 10 04 17 16 18 02 6D 04 6D 03 4A 00 F8 E1 00 A1
0EA0001C0: 14 04 17 15 68 02 68 04 65 03 32 00 F8 E2 00 72
0EA0001D0: 14 04 18 15 65 02 6A 04 B5 03 28 00 F8 E3 00 2B
0EA0001E0: 14 04 18 15 CC 02 6A 04 DF 03 1F 00 F8 E3 00 A3
0EA0001F0: 14 04 18 16 0F 02 6C 05 17 03 1C 00 F8 E4 00 26
0EA000200: 14 04 19 16 51 02 6D 05 46 03 16 00 F8 E5 00 B8
0EA000210: 15 04 19 17 01 02 6E 05 82 03 1B 00 F8 E6 00 C3
0EA000220: 18 04 1B 17 86 02 73 05 B9 03 28 00 F8 E7 00 EF
0EA000230: 18 04 1C 18 24 02 77 05 F9 03 2F 00 F8 E7 00 04
0EA000240: 18 04 1D 18 BD 02 7B 06 2B 03 36 00 F8 E8 00 2B
0EA000250: 18 04 1D 19 3E 02 7C 06 5D 03 37 00 F8 E9 00 74
0EA000260: 18 04 1D 18 EA 02 7B 06 9A 03 33 00 F8 EA 00 90
0EA000270: 19 04 1D 17 E1 02 80 06 D7 03 25 00 F8 EB 00 64
0EA000280: 1B 04 20 17 B7 02 92 07 1C 03 3A 00 F8 EB 00 1C
0EA000290: 1B 04 21 18 68 02 91 07 65 03 33 00 F8 EC 00 27
0EA0002A0: 1B 04 21 18 D4 02 94 07 9D 03 34 00 F8 ED 00 7E
0EA0002B0: 1B 04 20 18 BE 02 96 07 E1 03 34 00 F8 EE 00 4E
0EA0002C0: 1B 04 21 18 D9 02 95 08 28 03 2C 00 F8 EF 00 F2
0EA0002D0: 1B 04 20 19 23 02 93 08 6A 03 23 00 F8 EF 00 71
0EA0002E0: 1B 04 21 19 4A 02 92 08 B4 03 1B 00 F8 F0 00 07
0EA0002F0: 1B 04 20 19 79 02 91 08 FB 03 16 00 F8 F1 00 97
0EA000300: 1B 04 20 19 6F 02 91 09 34 03 0F 00 F8 F2 00 6D
0EA000310: 1B 04 21 19 6F 02 91 09 77 03 0A 00 F8 F3 00 2D
0EA000320: 1B 04 20 19 98 02 8E 09 B5 03 01 00 F8 F3 00 D3
0EA000330: 1B 04 20 19 97 02 8D 09 ED 02 FA 00 F8 F4 00 A4
0EA000340: 1B 04 20 19 91 02 8D 0A 2E 02 F4 00 F8 F5 00 6D
```

0EA000350: 1B 04 1F 19 9D 02 8C 0A 62 02 EE 00 F8 F6 00 34
0EA000360: 1B 04 1F 19 D3 02 89 0A 91 02 E6 00 F8 F7 00 D9
0EA000370: 1B 04 1F 19 B7 02 87 0A C8 02 DE 00 F8 F7 00 C8
0EA000380: 1B 04 1F 19 B1 02 86 0B 01 02 D7 00 F8 F8 00 9B
0EA000390: 1B 04 1F 19 D5 02 84 0B 2B 02 D1 00 F8 F9 00 54
0EA0003A0: 1B 04 1F 19 E2 02 83 0B 5B 02 CA 00 F8 FA 00 1E
0EA0003B0: 18 04 1E 19 E3 02 84 0B 8F 02 C6 00 F8 FB 00 EF
0EA0003C0: 18 04 1E 19 F2 02 80 0B B5 02 BF 00 F8 FB 00 C5
0EA0003D0: 18 04 1D 19 E2 02 7D 0B E1 02 B8 00 F8 FC 00 B3
0EA0003E0: 19 04 1E 19 D7 02 7C 0B F1 02 B5 00 F8 FD 00 AF
0EA0003F0: 19 04 1C 18 3F 02 78 0C 24 02 A0 00 F8 FE 00 2E
0EA000400: 19 04 1D 18 01 02 87 0C 4D 02 AC 00 F8 FF 00 26
0EA000410: 19 04 1D 18 00 02 85 0C 6A 02 A8 00 F8 FF 00 10
0EA000420: 19 04 1D 18 0D 02 84 0C 91 02 A6 00 F8 FF 00 DF
0EA000430: 19 04 1D 17 E1 02 85 0C B1 02 A5 00 F8 FF 00 EC
0EA000440: 19 04 1D 17 FA 02 85 0C CE 02 A4 00 F8 FF 00 B7
0EA000450: 15 04 1A 18 2E 02 7D 0C F1 02 99 00 F8 FF 00 79
0EA000460: 15 04 1A 17 80 02 77 0D 0C 02 8D 00 F8 FF 00 1E
0EA000470: 15 04 1A 16 F8 02 76 0D 2A 02 88 00 F8 FF 00 8F
0EA000480: 17 04 1A 16 F8 02 74 0D 3D 02 84 00 F8 FF 00 80
0EA000490: 17 04 1A 16 FF 02 73 0D 59 02 81 00 F8 FF 00 61
0EA0004A0: 17 04 1A 16 CB 02 74 0D 7E 02 81 00 F8 FF 00 6F
0EA0004B0: 16 04 19 16 AA 02 75 0D 8B 02 81 00 F8 FF 00 84
0EA0004C0: 14 04 19 16 E8 02 71 0D 9D 02 7C 00 F8 FF 00 3F
0EA0004D0: 14 04 19 16 D2 02 6E 0D B9 02 77 00 F8 FF 00 41
0EA0004E0: 14 04 19 16 9A 02 6E 0D AE 02 76 00 F8 FF 00 85
0EA0004F0: 14 04 19 15 0B 02 73 0D CC 02 6C 00 F8 FF 00 FC
0EA000500: 14 04 1A 15 8E 02 76 0D DE 02 6E 00 F8 FF 00 61
0EA000510: 15 04 1B 16 51 02 76 0D EF 02 6F 00 F8 FF 00 89
0EA000520: 15 04 1B 16 A6 02 7A 0D F2 02 74 00 F8 FF 00 28
0EA000530: 15 04 1B 16 B7 02 7B 0E 15 02 76 00 F8 FF 00 F0
0EA000540: 11 04 17 16 D8 02 79 0E 20 02 74 00 F8 FF 00 D0
0EA000550: 0F 04 15 16 4C 02 65 0E 31 02 5C 00 F8 FF 00 7B
0EA000560: 00 04 0F 14 B3 02 50 0E 3C 02 43 00 F8 FF 00 4E
0EA000570: 00 07 0E 11 AF 02 33 0C 4C 02 25 00 FC FF 00 7C
0EA000580: 00 07 0D 0F 02 02 3C 08 CD 02 33 00 FC FF 00 98
0EA000590: 00 07 0B 0F F1 02 27 08 25 02 19 01 FC FF 00 81
0EA0005A0: 00 07 0A 10 B9 02 13 08 5D 01 FB 01 F8 FF 00 B8
0EA0005B0: 00 07 0A 0F F2 02 11 07 1F 01 F5 01 FC FF 00 C3
0EA0005C0: 00 07 09 0F 2C 02 0F 07 23 01 F6 01 FC FF 00 87
0EA0005D0: 00 07 09 0C CD 02 0F 05 EC 01 F6 01 FC FF 00 22
0EA0005E0: 00 07 09 09 33 02 0D 05 14 01 FA 01 FC FF 00 95
0EA0005F0: 00 07 09 07 B7 02 09 03 5A 01 F4 01 FC FF 00 D9
0EA000600: 00 06 09 08 8F 02 0A 02 80 01 FA 01 F8 FF 00 D9
0EA000610: 00 06 08 06 68 02 18 02 62 02 18 01 F8 FF 00 F4
0EA000620: 00 07 08 07 56 02 14 02 5E 02 02 01 F8 FF 00 22
0EA000630: 00 07 08 06 E8 02 23 02 4C 02 43 01 F8 FF 00 53
0EA000640: 00 07 08 06 CC 02 25 02 38 02 4E 01 F8 FF 00 76
0EA000650: 00 07 08 07 3B 02 2A 02 00 02 58 01 F8 FF 00 2F
0EA000660: 00 06 09 06 D1 02 27 01 D4 02 45 01 F8 FF 00 DD
0EA000670: 00 07 09 05 20 02 2A 01 C8 02 4C 01 F8 FF 00 90
0EA000680: 00 07 09 07 82 02 33 01 C6 02 7D 01 F8 FF 00 F4
0EA000690: 00 07 09 05 70 02 3B 01 BF 02 87 01 F8 FF 00 FD
0EA0006A0: 00 06 09 03 64 02 29 01 B0 02 43 01 F8 FF 00 71
0EA0006B0: 00 06 0A 07 EA 02 57 01 AA 03 1C 01 F8 FF 00 E4
0EA0006C0: 00 06 0A 04 AB 02 53 01 99 02 DF 01 F8 FF 00 79
0EA0006D0: 00 07 0A 02 96 02 57 01 7C 02 FE 01 F8 FF 00 89
0EA0006E0: 00 06 04 01 55 01 A6 01 90 00 00 01 F8 FF 00 70
0EA0006F0: 00 06 12 00 00 02 F9 01 85 07 CC 01 F8 FF 00 9C
0EA000700: 00 04 11 00 00 02 EE 01 7D 07 84 01 F8 FF 00 FA
0EA000710: 00 04 11 00 00 02 ED 01 74 07 7D 01 F8 FF 00 0B
0EA000720: 00 06 07 0A F7 01 FB 05 96 01 DC 00 F8 C1 00 C5
0EA000730: 00 07 07 0A 72 01 FB 05 7A 01 DC 00 F8 C2 00 64
0EA000740: 00 07 07 0A 1B 01 FC 05 6B 01 DD 00 F8 C3 00 C7
0EA000750: 00 07 07 0A 08 01 FC 05 43 01 DD 00 F8 C3 00 02
0EA000760: 00 07 07 0A 1C 01 FE 05 23 01 DF 00 F8 C4 00 09
0EA000770: 00 07 07 0A 2E 01 FD 05 08 01 DE 00 F8 C5 00 13
0EA000780: 00 07 07 0A 1A 01 FD 04 ED 01 DE 00 F8 C6 00 42
0EA000790: 00 07 07 09 EE 01 FE 04 D3 01 DF 00 F8 C7 00 86
0EA0007A0: 00 07 07 09 D6 01 FE 04 B8 01 DE 00 F8 C7 00 BA

0EA0007B0: 00 07 07 09 C7 01 FF 04 9A 01 DF 00 F8 C8 00 E4
0EA0007C0: 00 07 07 09 AB 01 FF 04 7D 01 B4 00 F8 C9 00 47
0EA0007D0: 00 07 07 09 96 02 00 04 59 01 B6 00 F8 CA 00 7B
0EA0007E0: 00 07 07 09 AD 02 00 04 42 01 B7 00 F8 CB 00 79
0EA0007F0: 00 07 07 09 B3 02 00 04 21 01 BB 00 F8 CB 00 90

Disclaimer of Liability

The users of the CDR product and reviewers of the CDR reports and exported data shall ensure that data and information supplied is applicable to the vehicle, vehicle's system(s) and the vehicle ECU. Robert Bosch LLC and all its directors, officers, employees and members shall not be liable for damages arising out of or related to incorrect, incomplete or misinterpreted software and/or data. Robert Bosch LLC expressly excludes all liability for incidental, consequential, special or punitive damages arising from or related to the CDR data, CDR software or use thereof.